

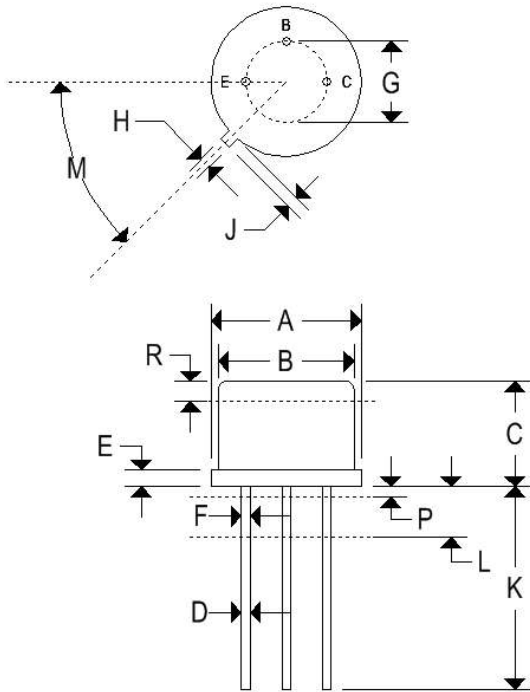
DIGITRON SEMICONDUCTORS

MECHANICAL CASE OUTLINE PACKAGE DIMENSIONS

DATE 03 JUN 2014

CASE TO-39

CASE	HERMETICALLY SEALED METAL
MARKING	ALPHA-NUMERIC
PIN OUT	SEE BELOW
WEIGHT	1 GRAM (APPROXIMATE)



	TO-39			
	Inches		Millimeters	
	Min	Max	Min	Max
A	0.350	0.370	8.890	9.400
B	0.315	0.335	8.000	8.510
C	0.240	0.260	6.10	6.60
D	0.016	0.021	0.406	0.533
E	0.009	0.125	0.2269	3.180
F	0.016	0.019	0.406	0.533
G	0.190	0.210	4.830	5.33
H	0.028	0.034	0.711	0.864
J	0.029	0.040	0.737	1.020
K	0.500	-	12.700	-
L	0.250	-	6.350	-
M	45° NOM		45° NOM	
P	-	0.050	-	1.270
Q	90° NOM		90° NOM	
R	0.100	-	2.540	-

This drawing is for reference only. Please refer to Digitron's published datasheet.