

# DIGITRON SEMICONDUCTORS

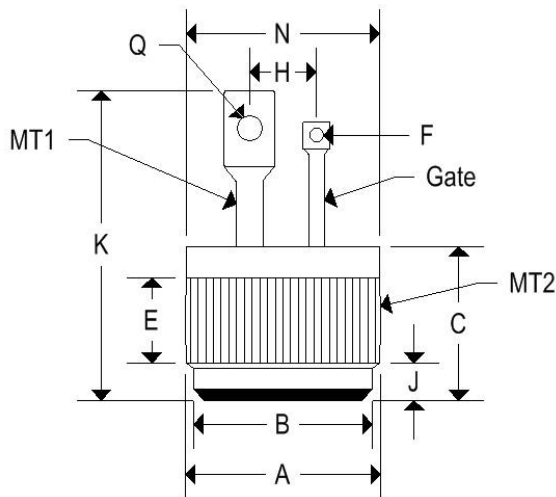
## MECHANICAL CASE OUTLINE PACKAGE DIMENSIONS

DATE 08 JAN 2018

### CASE DIGI PF2

PRESS FIT

<b>CASE</b>	HERMETICALLY SEALED METAL
<b>MARKING</b>	ALPHA NUMERIC
<b>WEIGHT</b>	7.530 GRAMS (APPROXIMATE)



	DIGI PF2			
	Inches		Millimeters	
	Min	Max	Min	Max
<b>A</b>	0.501	0.505	12.730	12.830
<b>B</b>	0.465	0.475	11.810	12.060
<b>C</b>	0.330	0.380	8.390	9.650
<b>E</b>	0.100	-	2.540	-
<b>F</b>	0.035	0.085	0.890	2.160
<b>J</b>	0.080	0.097	2.040	2.460
<b>K</b>	-	0.800	-	20.320
<b>N</b>	-	0.510	-	12.950
<b>Q</b>	0.065	0.160	1.650	4.060

This drawing is for reference only. Please refer to Digitron's published datasheet.