

# DIGITRON SEMICONDUCTORS

**1N6513, 1N6515  
1N6517, 1N6519**

**0.5A-2.0A RECTIFIERS**

2,000V - 10,000V working reverse voltage  
70 ns Recovery Time  
Operating Temperature = -65 to +175°C  
Storage Temperature = -65 to +200°C

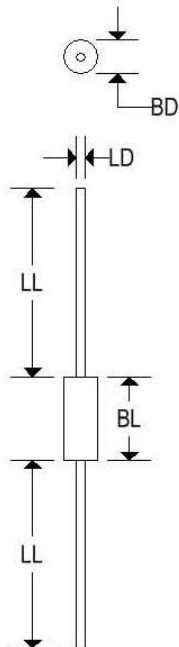
## ELECTRICAL CHARACTERISTICS

Part Number	Working Reverse Voltage (V <sub>RWM</sub> )	Average Rectified Current (I <sub>o</sub> )		Reverse Current @ V <sub>RWM</sub> (I <sub>r</sub> )		Forward Voltage (V <sub>F</sub> )		Cycle Surge Current t <sub>p</sub> = 8.3ms (I <sub>FSM</sub> )	Rep. Surge Current (I <sub>FSM</sub> )	Reverse Recovery Time <sup>(3)</sup> (T <sub>RR</sub> )	Thermal Impedance θ <sub>J-L</sub>			Junction Cap. @ 50VDC @1kHz (C <sub>j</sub> )	
		55°C <sup>(1)</sup>	100°C <sup>(2)</sup>	25°C	100°C	25°C					25°C	25°C	25°C		25°C
		V	A	A	μA	μA	V				A	A	A		ns
<b>1N6513</b>	2000	2.00	1.50	1.0	25	3.5	2.0	100	15	70	3	6	12	25	
<b>1N6515</b>	3000	1.50	1.00	1.0	25	6.0	1.5	60	10	70	3	6	12	20	
<b>1N6517</b>	5000	1.00	0.50	1.0	25	8.0	1.0	40	8	70	3	6	12	16	
<b>1N6519</b>	10000	0.50	0.25	1.0	25	13.0	0.5	25	5	70	3	6	12	8	

(1) T<sub>L</sub> = 55°C; L = 0.375" (2) T<sub>L</sub> = 100°C; L = 0.375" (3) I<sub>F</sub> = 0.5A; I<sub>RR</sub> = 1.0A

## MECHANICAL CHARACTERISTICS

<b>Case</b>	SOD-57
<b>Marking</b>	Body painted, alpha-numeric
<b>Polarity</b>	Cathode band



	SOD-57			
	Inches		Millimeters	
	Min	Max	Min	Max
BD	-	0.142	-	3.600
BL	-	0.157	-	4.000
LD	-	0.032	-	0.820
LL	1.024	-	26.000	-

Available Non-RoHS (standard) or RoHS compliant (add PBF suffix).  
Available as "HR" (high reliability) screened per MIL-PRF-19500, JANTX level. Add "HR" suffix to base part number.

# DIGITRON SEMICONDUCTORS

1N6513, 1N6515  
1N6517, 1N6519

2,000 V – 10,000 V RECTIFIERS

